



CERTIFICATE OF EXAMINATION

ASH 605

Complete

| | | | | | |
|-------|----------------|---------------|---|---------|---|
| Score | 55 / 55 (100%) | Flagged items | 0 | Actions | 0 |
|-------|----------------|---------------|---|---------|---|

Site conducted

JH0005 Old Dairy, Kimpton High Street

Conducted on

29 Nov 2023 11:51 AM GMT

Prepared by

A bunker

Location

160 High St, Kimpton, Hitchin
SG4 8QR, UK
(51.8493783,
-0.30625979999999997)

Asset

ASH 605
6 Ton Dumpers - Dumper 6T
Barford SX6000 - 2004

Asset serial number

Pd0231

Asset hours

Supply photo's of asset



Photo 1



Photo 2



Photo 3

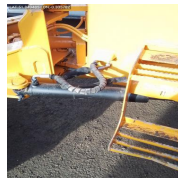


Photo 4

| Power unit | 11 / 11 (100%) |
|---------------------------|----------------|
| Oil level | Acceptable |
| Water/Antifreeze level | Acceptable |
| Belt tension/Condition | Acceptable |
| Mountings | Acceptable |
| Emissions/Exhaust | Acceptable |
| Oil leaks | Acceptable |
| Hoses & pipes | Acceptable |
| Gauges/Warning indicators | N/A |
| Turbo | N/A |
| Air cleaner/Indicator | Acceptable |
| Spark Arrestor | N/A |

| Transmission | | 5 / 5 (100%) |
|----------------------------|--|-------------------|
| Oil levels/Leaks | | Acceptable |
| Controls/Operations | | Acceptable |
| Drive shafts/Axles | | Acceptable |
| Hub reduction units/levels | | Acceptable |
| Transfer box/levels | | Acceptable |

| Brakes | 5 / 5 (100%) |
|-------------------------|--------------|
| Air/Hydraulic leaks | Acceptable |
| Drums/Discs/Pads/Shoes | Acceptable |
| Foot/Hand controls | Acceptable |
| Cables/Rods/Pipes | Acceptable |
| Fluid levels/Efficiency | Acceptable |

| Steering | 6 / 6 (100%) |
|--------------------------|--------------|
| Box/Column/Wheel | Acceptable |
| King Pins/Bushes | Acceptable |
| Ramp/Pump/Hoses | Acceptable |
| Track Rods/Steering Arms | Acceptable |
| Linkages/Ball joints | Acceptable |
| Oil levels/Leakes | Acceptable |

| Running Gear | | 5 / 5 (100%) |
|---------------------------|--|-------------------|
| Tyres/Wheels/Tracks | | Acceptable |
| Wheel bearings | | Acceptable |
| Axle security | | Acceptable |
| Over run brake rods/cable | | N/A |
| Towing/Frame Attachments | | Acceptable |

| Fuel System | 4 / 4 (100%) |
|--------------------|--------------|
| Fuel tank/Security | Acceptable |
| Fuel line/leaks | Acceptable |
| Filters/Pumps | Acceptable |
| Fuel level/Gauge | Acceptable |

| Hydraulics | | 5 / 5 (100%) |
|-------------------|--|-------------------|
| Rams | | Acceptable |
| Pumps/Hoses/Pipes | | Acceptable |
| Safety indicators | | Acceptable |
| Oil levels/leaks | | Acceptable |
| Controls | | Acceptable |

| Electrical | 10 / 10 (100%) |
|--------------------------|----------------|
| Battery | Acceptable |
| Alternator/Charging | Acceptable |
| Wiring | Acceptable |
| Fuses/Circuit breakers | Acceptable |
| Lights/Indicators | N/A |
| Warning Indicators | Acceptable |
| Outlet sockets | N/A |
| Limit/Proximity switches | Acceptable |
| Safety Devices | Acceptable |
| Warning Devices | Acceptable |

| | |
|----------------|--------------|
| Cab | 4 / 4 (100%) |
| Seating/Belts | Acceptable |
| Structure/Rops | Acceptable |
| Glass/Mirrors | N/A |
| Mountings | N/A |

Sign off

Engineers name & signature

A handwritten signature in black ink, consisting of several fluid, overlapping strokes.

a bunker
29 Nov 2023 12:01 PM GMT

Media summary

LAT:51.849485 LON:-0.305782



Photo 1

LAT:51.849485 LON:-0.305782



Photo 2

LAT:51.849485 LON:-0.305782



Photo 3

LAT:51.849485 LON:-0.305782



Photo 4